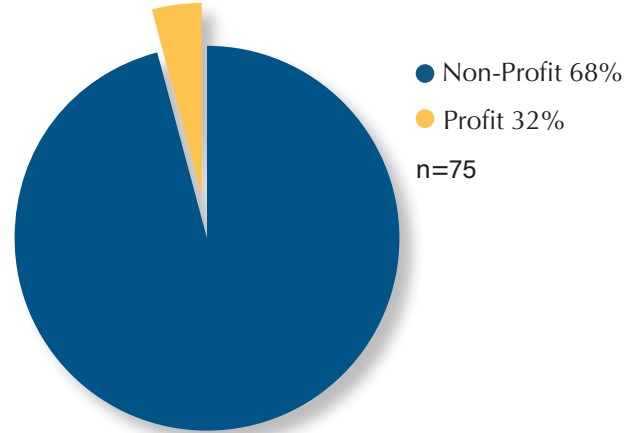


# Nursing Facility Facts

## Nursing Facilities AT A GLANCE

75 licensed nursing facilities  
5,226 licensed beds  
2024 average occupancy was **89.7%**

Ownership of Nursing Facility



## Nursing Facility Facts

- Resident needs are complex and require 24-hour nursing care.
- More than half of residents are admitted directly from a hospital.
- The most significant issue necessitating admission to a nursing facility is the need for care throughout the day. Residents are unable to meet their own needs for dressing, toileting, eating, and remaining safe. Most often their medical needs are complex, requiring continuous attention.
- Current residents range in age from 30 years to 105 years old, with the average age being 68.
- Thirty of the 75 reporting facilities discharged 1,799 residents in the 12-month period ending June 30, 2024.
- North Dakota's nurse hours per resident day is 4.95, compared to the US average 3.85.

Gender of Nursing Facility Residents  
n=1,855



**64%** of residents in North Dakota NURSING FACILITIES are female

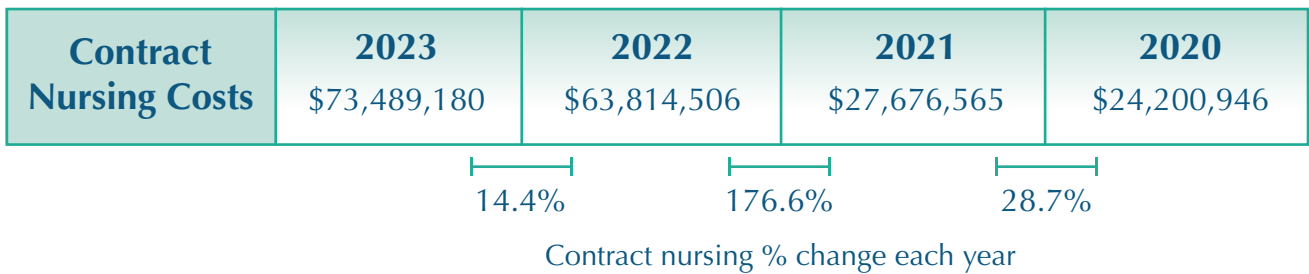
# Nursing Facility Facts



## Nursing Facility WORKFORCE

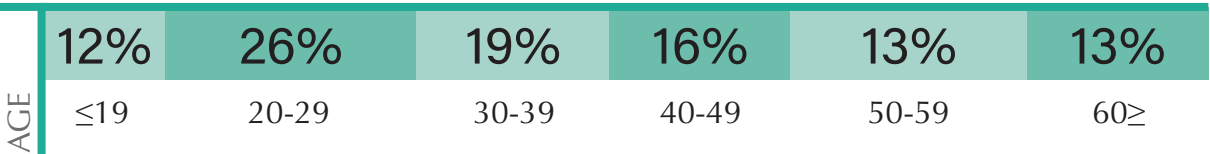


- The top issue facing nursing facilities is workforce and reimbursement.
- 23% of nursing facilities stopped admissions in 2024 because of lack of staff.
- During the pandemic, nursing facilities lost 15.3% of their staff and they have not returned.
- 26% of the workforce is age 50 or older, with the oldest employee being 93.
- 16% of nursing hours in 2023 were contracted staff.
- In 2024, 2 facilities have closed due to financial viability, staffing, and burdensome regulations.



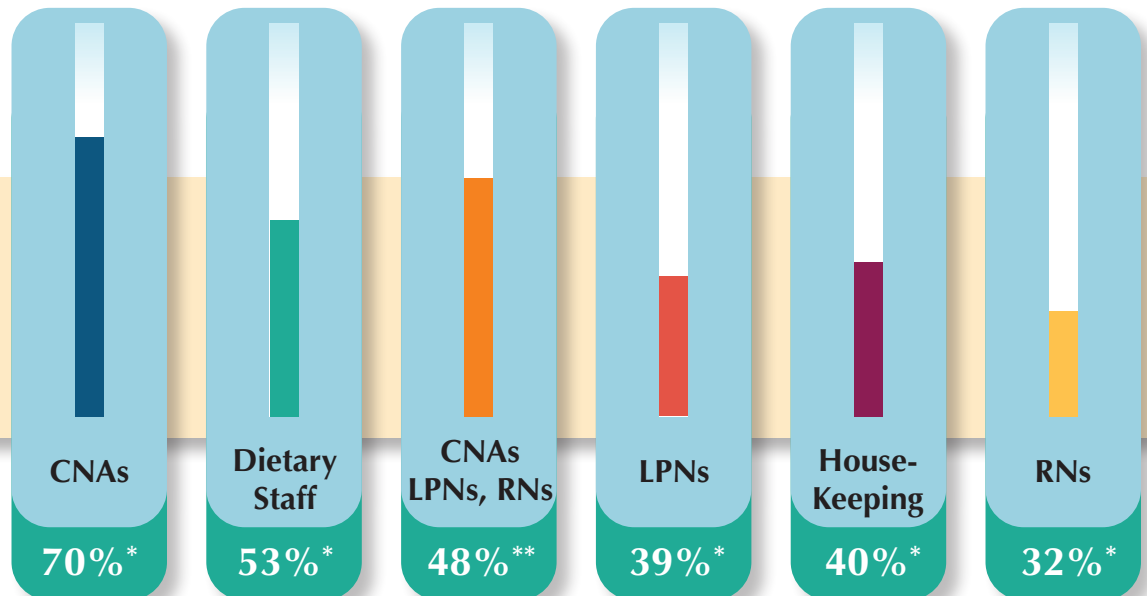
### Age of Nursing Facility Workforce

n=4,630



### 2024 Nursing Facility Staff Turnover

\*NDLTCA Survey  
\*\*CMA PBJ Reporting

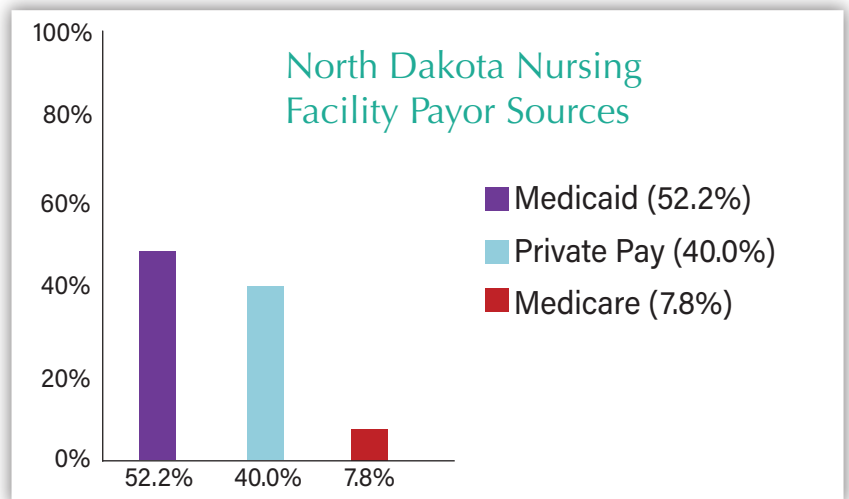


# Nursing Facility Facts

## Nursing Facility COST

In 2024, **14%** of residents had a long term care insurance policy paying for a portion of their care.

*In 2024,*  
the average cost for  
**ONE DAY** of  
nursing facility care is  
**\$403.19**



## Why do individuals move into a nursing facility?

The top three reasons for nursing facility admission:

- 1) Assistance with daily care
- 2) Complex medical needs
- 3) Needs continuous supervision

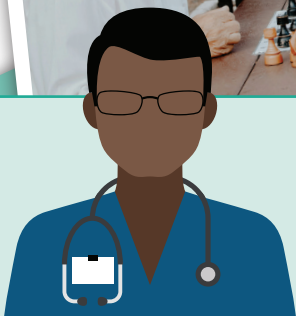
When residents are discharged from a skilled nursing facility, where do they go?

**49%** of ND nursing home residents are **discharged to the community.**

# Nursing Facilities

## North Dakota is ranking high Resident Satisfaction

Item	Rating Value	North Dakota	United States
Overall Satisfaction	4 & 5	<b>91%</b>	73%
Nursing Care	4 & 5	<b>94%</b>	82%
Cleanliness	4 & 5	<b>95%</b>	84%
Dignity & Respect	4 & 5	<b>96%</b>	88%
Recommend to Others	4 & 5	<b>94%</b>	77%
Safety & Security	4 & 5	<b>97%</b>	90%
Quality of Food	4 & 5	<b>72%</b>	56%



CMS tracks the hours worked by different types of staff in nursing facilities. These hours are used to calculate a ratio of staffing hours per resident per day. Hours per resident per day described the average amount of time staff are available to spend with each resident per day.

- ND Nurse hours per day 5.12

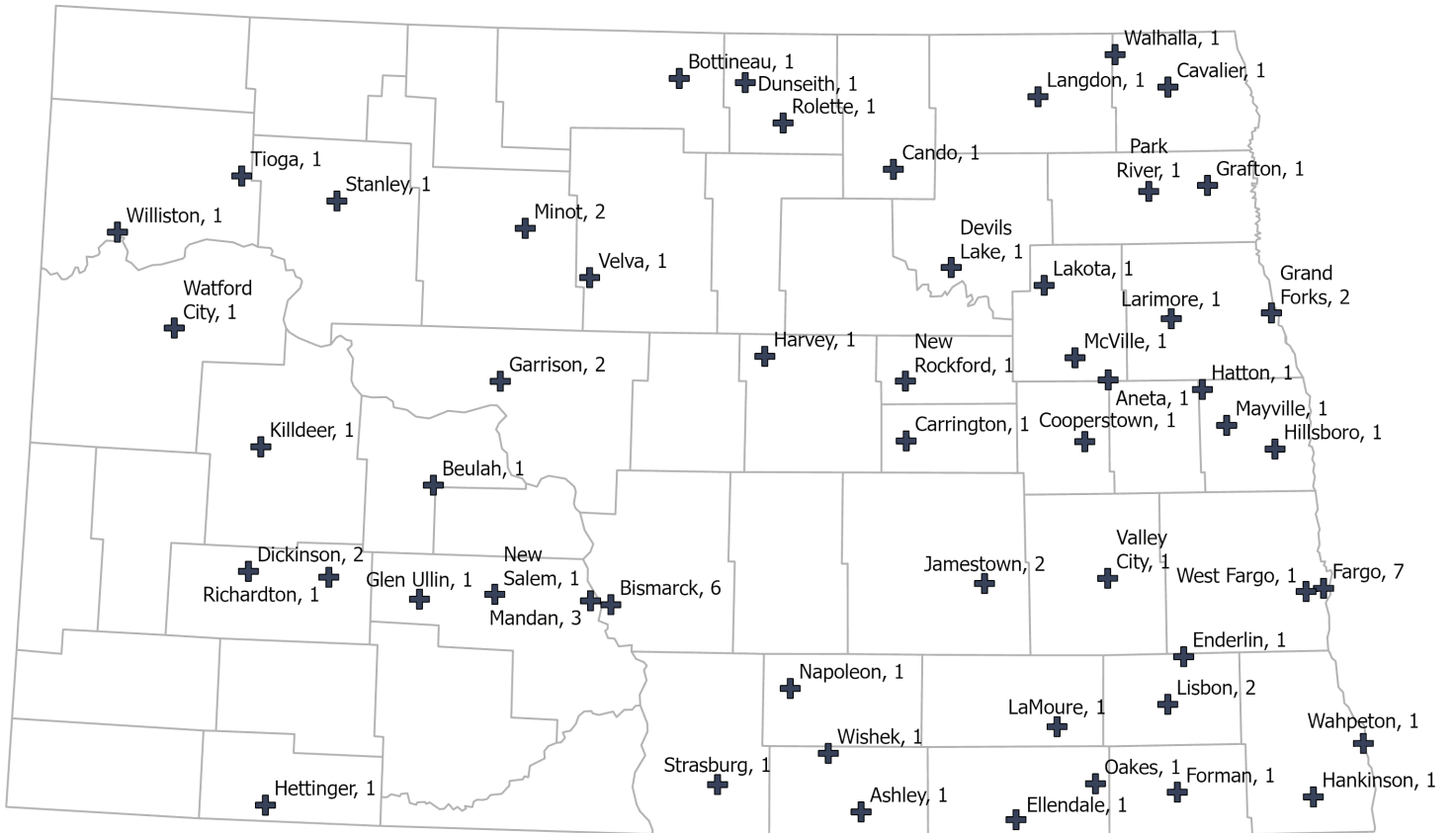
- US Nurse hours per day 3.89


# NDLTCA Members Nursing Facilities

<u>City</u>	<u>Facility Name</u>	<u>City</u>	<u>Facility Name</u>
Aneta	Aneta Parkview Health Center	Hettinger	Western Horizons Care Center
Ashley	Ashley Medical Center	Hillsboro	Sanford Health Hillsboro Care Center
Beulah	Knife River Care Center	Jamestown	SMP Health - Ave Maria
Bismarck	Good Samaritan Society - Augusta Place	Jamestown	Eventide - Jamestown
Bismarck	Good Samaritan Society - St. Vincent's	Killdeer	Hill Top Home of Comfort
Bismarck	Baptist Health & Rehab	Lakota	Good Samaritan Society - Lakota
Bismarck	Missouri Slope - Hillview Campus	LaMoure	Benedictine Living Community of LaMoure - Rosewood
Bismarck	Missouri Slope - Washington Campus	Langdon	Maple Manor Care Center
Bismarck	Benedictine Living Community - Bismarck	Larimore	Good Samaritan Society - Larimore
Bottineau	Good Samaritan Society - Bottineau	Lisbon	North Dakota Veterans Home
Cando	Towner County Living Center	Lisbon	Parkside Lutheran Home
Carrington	Golden Acres Manor	Mandan	Dakota Alpha
Cavalier	Wedgewood Manor	Mandan	Good Samaritan Society - Miller Pointe
Cooperstown	Griggs County Care Center	Mandan	Good Samaritan Society - Sunset Drive
Devils Lake	Eventide Heartland Care Center	Mayville	Luther Memorial Home
Dickinson	Benedictine Living Community - Dickinson	McVille	Nelson County Health Systems Care Center
Dickinson	St. Luke's Home	Minot	Minot Health and Rehab
Dunseith	Dunseith Community Nursing Home	Minot	Trinity Homes
Ellendale	Benedictine Living Community - Ellendale	Napoleon	Wentz Living Center
Enderlin	SMP Health - Maryhill	New Rockford	Lutheran Home of the Good Shepherd
Fargo	Bethany on 42nd Skilled Care	New Salem	Elm Crest Manor
Fargo	Bethany on University Skilled Care	Oakes	Good Samaritan Society - Oakes
Fargo	Elim Care	Park River	Good Samaritan Society - Park River
Fargo	Eventide Fargo	Richardton	Richardton Health Center
Fargo	The Meadows on University	Rolette	Rolette Community Care Center
Fargo	SMP Health - St. Catherine - North	Stanley	Mountrail Bethel Home
Fargo	SMP Health - St. Catherine - South	Strasburg	Strasburg Care Center
Forman	Four Seasons Healthcare Center	Tioga	Tioga Medical Center Long Term Care
Garrison	Benedictine Living Center of Garrison	Valley City	SMP Health - St. Raphael
Garrison	CHI St. Alexius - Garrison	Velva	Souris Valley Care Center
Glen Ullin	Marian Manor Healthcare Center	Wahpeton	Benedictine Living Community of Wahpeton - St Catherine's Living Center
Grafton	Lutheran Sunset Home	Walhalla	Pembilier Nursing Center
Grand Forks	Valley Senior Living on Columbia	Watford City	McKenzie County Healthcare Systems
Grand Forks	Woodside Village	West Fargo	Sheyenne Crossings Care Center & TCU
Hankinson	St. Gerard's Community of Care	Williston	Bethel Lutheran Nursing & Rehabilitation Center
Harvey	SMP Health - St. Aloisius	Wishek	Wishek Living Center
Hatton	Hatton Prairie Village		

# Nursing Facility Map

## North Dakota Nursing Facilities, 2024



 City, Nursing Facilities

Source: North Dakota Long Term Care Association  
 Created by the North Dakota Healthcare Workforce Group on 4/22/2024

